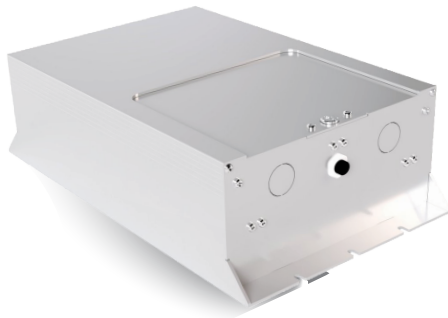


ILLUMINATOR LVM

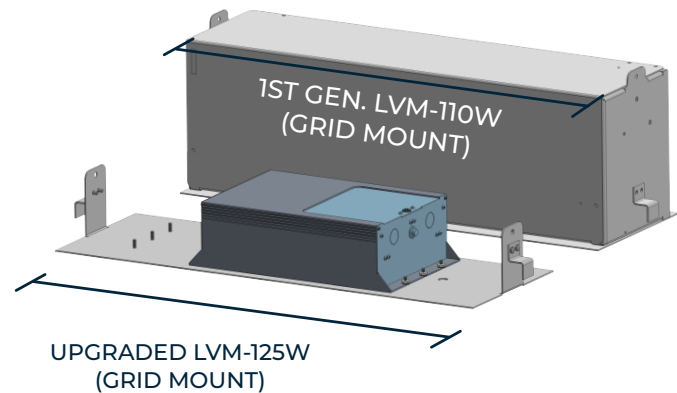
Single Phase Systems available in
125 and 250 Watt Units

LVM-125 UNIT (Standard Wall/Flush Mount)



UL 924 | CSA C22.2 No.141-15

SCALED COMPARISON (Grid Mount)



Smarter, Stronger, Smaller comes Standard

SMARTER



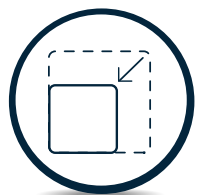
- **Automatic Voltage Detection** eliminates field wiring error
- **Automatic Bypass** overrides local switching and dimming controls
- **Automatic 0-10V Dimming** allows larger outputs to be supported safely
- **Automatic Monthly Testing** eliminate manual monthly testing demands

STRONGER



- A **power increase of over 10%***
- **LiFePO₄ Battery Chemistry** for safer, lighter & longer lasting batteries
- **Robust** Temperature Range (0-50° C); operates at 50/60 Hz
- **Plenum Rated**

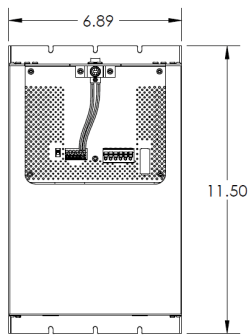
SMALLER



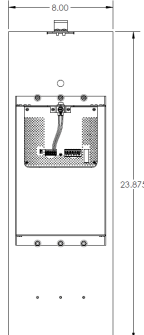
- More than **65% Decreased Volume***
- Over **40% Decreased Weight***
- Advanced High Frequency design is highly efficient and compact

**compared to previous generation of Myers EPS LVM*

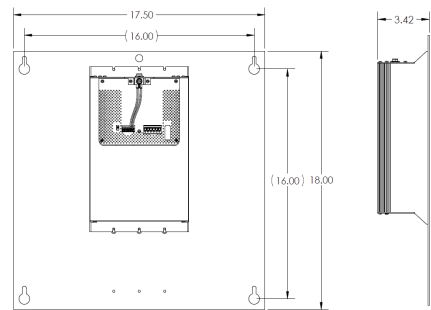
ILLUMINATOR LVM-125



LVM-125 only



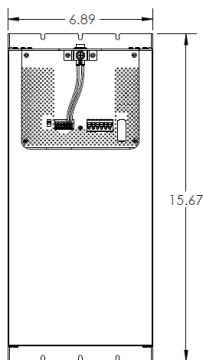
LVM-125 with Grid Mount



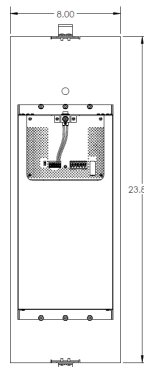
LVM-125 with Wall Mount

| | Model # | Height (in) | Width (in) | Depth (in) | Weight (lbs) |
|----------------|-----------|-------------|------------|------------|--------------|
| Inverter Only | LVM - 125 | 11.50 | 6.86 | 3.35 | 9.24 |
| w/ Grid Mount* | LVM - 125 | 23.875 | 8.00 | 3.42 | 13.64 |
| w/ Wall Mount* | LVM - 125 | 18.00 | 17.50 | 3.42 | 15.99 |

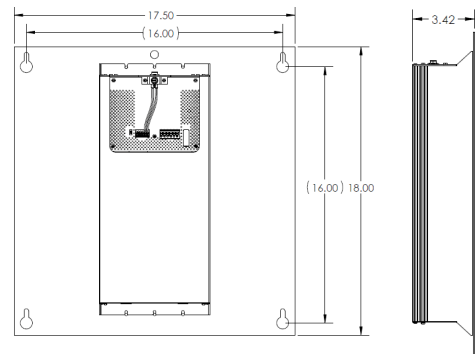
ILLUMINATOR LVM-250



LVM-250 only



LVM-250 with Grid Mount



LVM-250 with Wall Mount

| | Model # | Height (in) | Width (in) | Depth (in) | Weight (lbs) |
|----------------|-----------|-------------|------------|------------|--------------|
| Inverter Only | LVM - 250 | 15.67 | 6.86 | 3.35 | 15.40 |
| w/ Grid Mount* | LVM - 250 | 23.875 | 8.00 | 3.42 | 19.80 |
| w/ Wall Mount* | LVM - 250 | 18.00 | 17.50 | 3.42 | 22.15 |



ILLUMINATOR LVM-125 & LVM-250

SPECIFICATIONS

| VOLTAGE | | OUTPUT POWER | | WARRANTY | |
|------------|------------|--------------|---------|-----------------|---------------------------------|
| INPUT* | OUTPUT | LVM-125 | LVM-250 | ELECTRONICS | BATTERY |
| 120V, 60Hz | 120V, 60Hz | 125W | 250W | 3 year standard | 10 year prorated 2 year full |
| 230V, 50Hz | 230V, 50Hz | | | | |
| 277V, 60Hz | 277V, 60Hz | | | | |

*Automatic Voltage Detection increases Input capabilities

ORDERING GUIDE

Example Model Number:

L V M - 1 2 5 - W

SYSTEM TYPE

LVM

VA / W

125

250

OPTIONS¹

W - Wall Bracket Mount²

G - Grid / Plenum Rated³

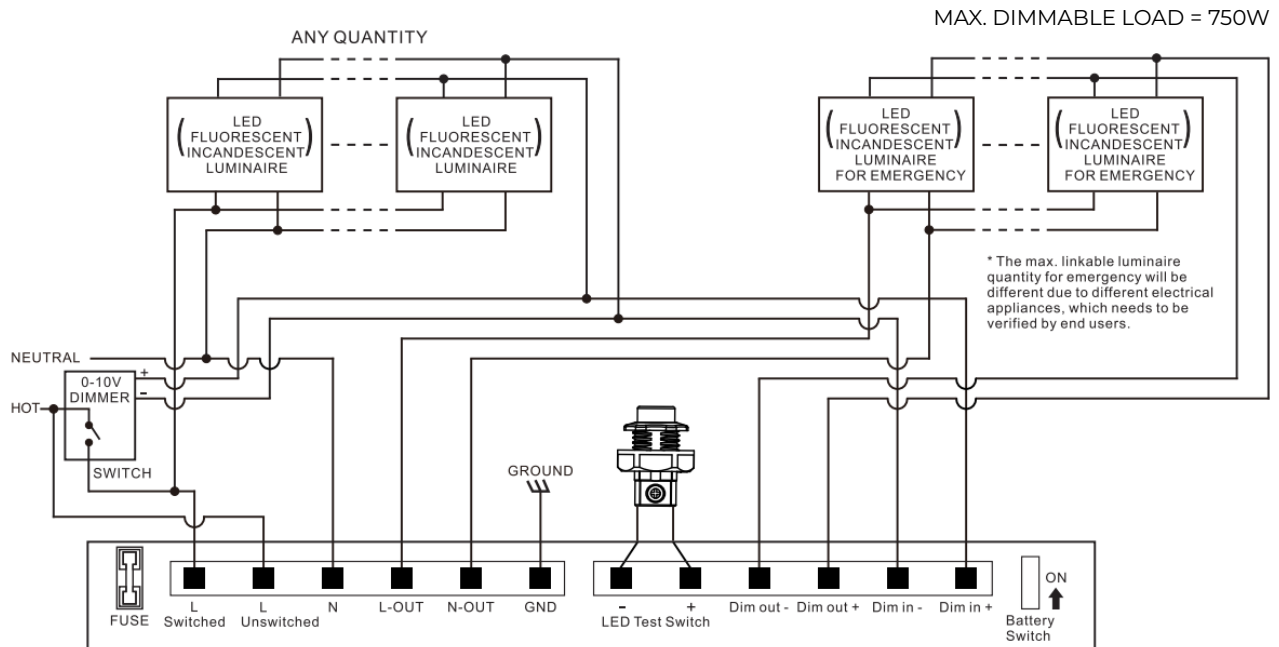
RT - Remote Test Switch

Please take note

1. See Mounting Guide for more in-depth descriptions of mounting options
2. Provides additional mounting bracket that allows unit to be mounted on 16" centers if required
3. Provides additional mounting bracket that allows unit to be mounted on in ceiling grid

ILLUMINATOR LVM-125 & LVM-250

0-10V DIMMABLE SYSTEM



NON - DIMMABLE SYSTEM

