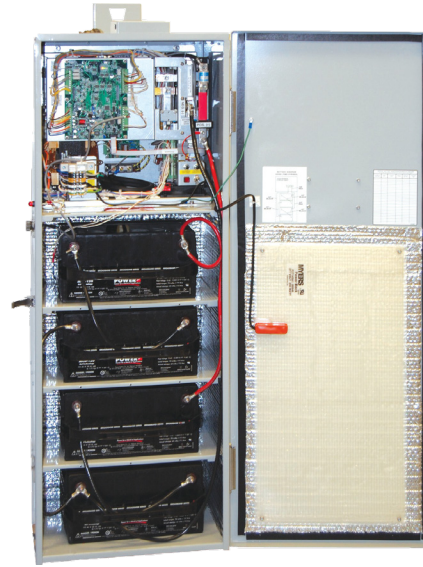


Illuminator SR

Outdoor Rated Emergency Lighting Inverter

Uninterruptible Power System
Single Phase Systems 875 VA/W & 1750VA/W



PRODUCT FEATURES

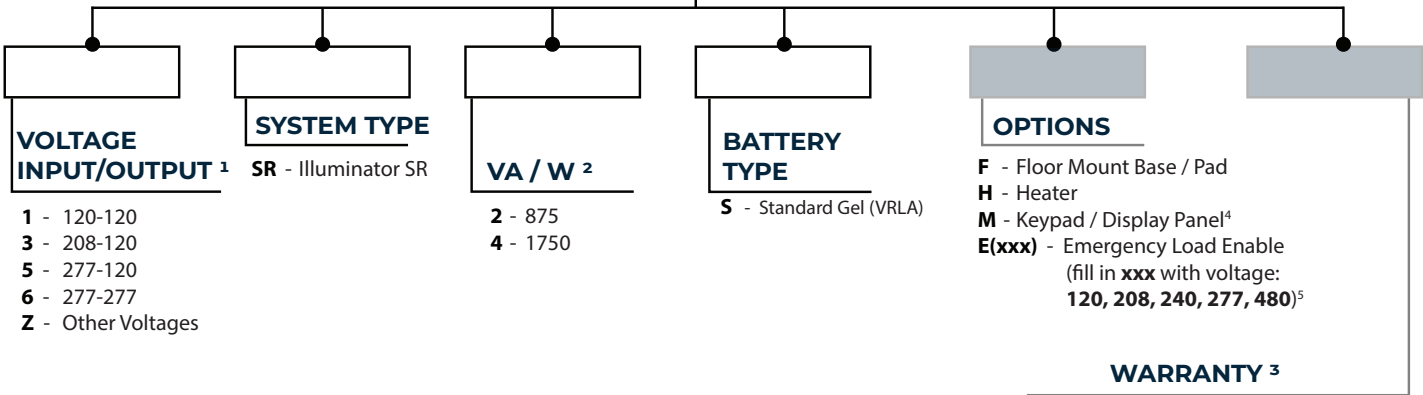
- 98% Efficient (Typical)
- UL 924 Listed
- 65 KAIC Input Rating
- Pole Mount and Optional Pad Mount
- Compatible With All Lighting Loads Including HID / LED
- NEMA 3R Rated Enclosure
- No Break 2ms Transfer Time
- 90 Minute Run Time
- Input Circuit Breaker
- Control Panel For Self-Testing And Diagnostics (Optional)

SPECIFICATIONS

- Input 120, 208, 240, 277, or 480 VAC 1-Phase 2-Wire
- Input Voltage Harmonic Distortion < 10%
- Output 120 Or 277 VAC 1-Phase 2-Wire
- Output Voltage Harmonic Distortion < 3%
- Output Load Power Factor .5 Lag To .5 Lead
- Compatible With All LED Drivers
- Standard Operating Temperature 32° To 122°F (0° To 50°C)
- Optional Emergency Load Enable
- Optional Operating Temperature to -4°F (-20°C)
- Compatible With Generators
- Status Lights: Normal, Battery Backup, and Fault
- Line Interactive PWM Inverter Utilizing MOSFET Technology
- Forced Air Cooling and Temperature Controlled Fan
- Optional Heater For Enhanced Performance At Cold Temperatures



ORDERING GUIDE

Example Model Number:
1-SR-2-S-2YW

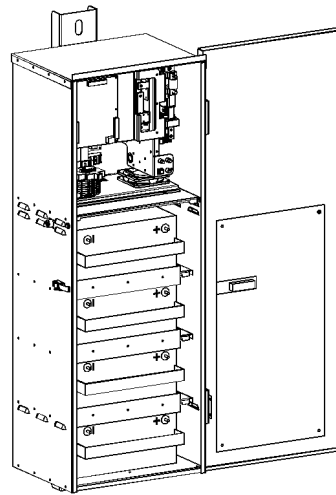
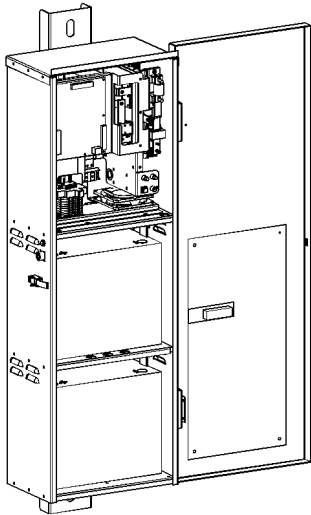


1. Only single phase voltages available. Other voltages may require UL testing.
2. VA = W
3. One year electronics warranty is standard
4. Used for system setup and status. One recommended per site.
5. Fill in applicable voltage. If voltage is not specified, voltage is assumed to match system input voltage. Option provides the ability to enable emergency output for typically unoccupied venues only when emergency egress is required; i.e. outdoor stadiums.

- 2YW - Start Up & Same Day Training
- 2YWT - Start Up, Same Day Training and Full Run Test
- 5YP - 5-Year Preventative Maintenance Plan
- 5YW - 5-Year Extended Electronics Warranty
- TR - Training If Required On Day Other Than Start Up

 = Required feature for part number.
 = Optional feature. Not required for part number.

DIMENSIONS



Power Rating (VA/W)	Typical Efficiency at Full Load	Audible Noise (dBA at 1m)	Width (in / cm)	Height (in / cm)	Depth (in / cm)	Cabinet Weight (lbs / kg)	Battery Weight (lbs / kg)	Total System Weight (lbs / kg)
875	98%	45	16.0 / 40.6	46.1 / 117.1	9.3 / 23.6	232 / 105	158 / 72	390 / 177
1750	98%	45	19.0 / 48.3	50.75 / 128.9	14.375 / 36.5	280 / 127	316 / 144	596 / 271

