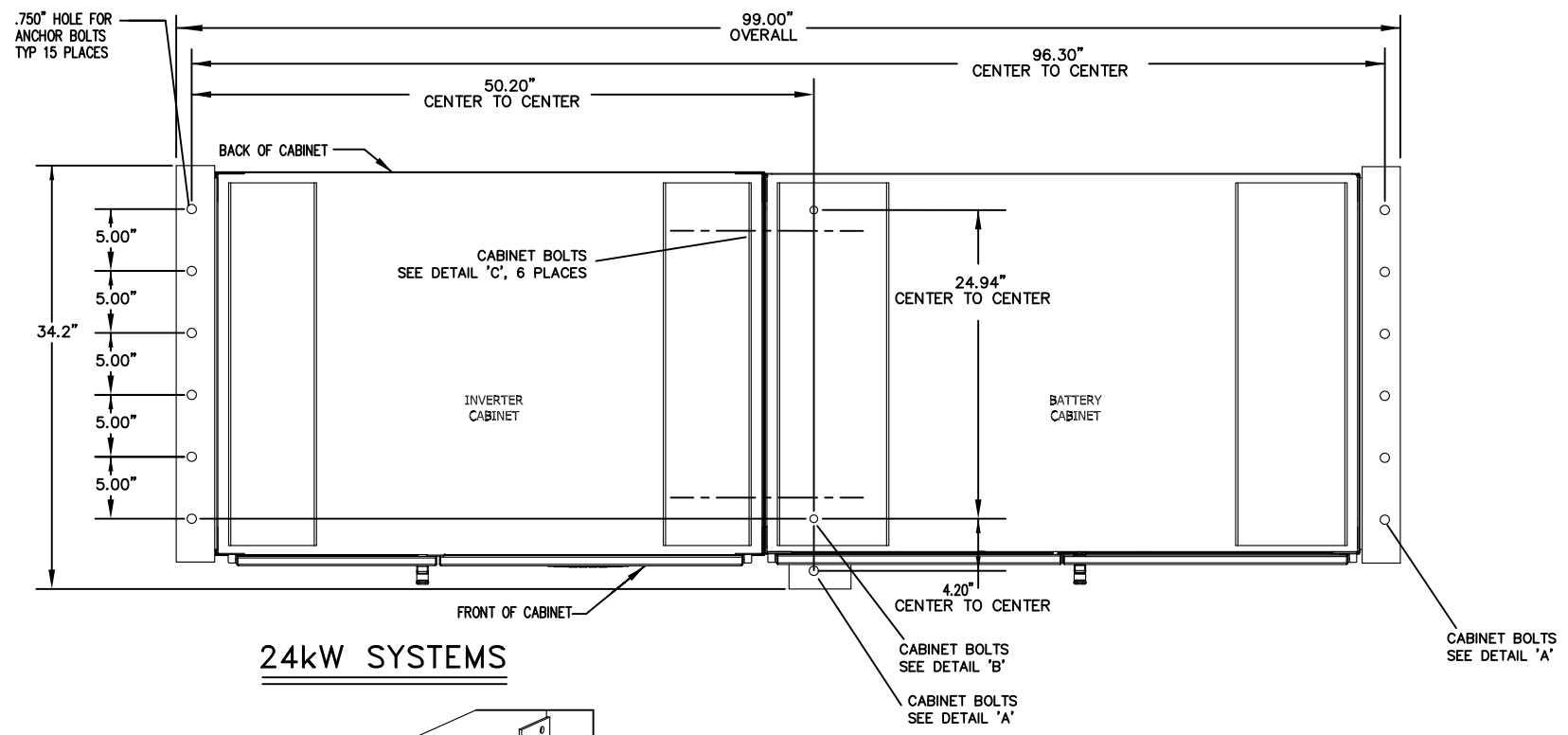


33k - 50kW SYSTEMS

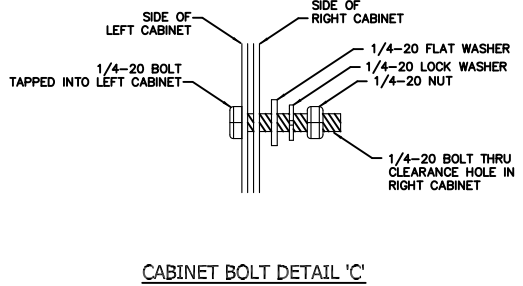
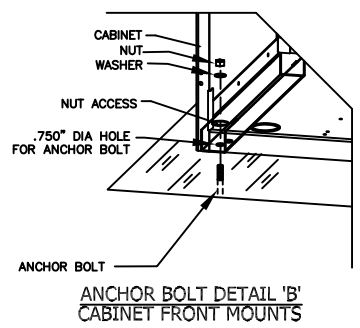
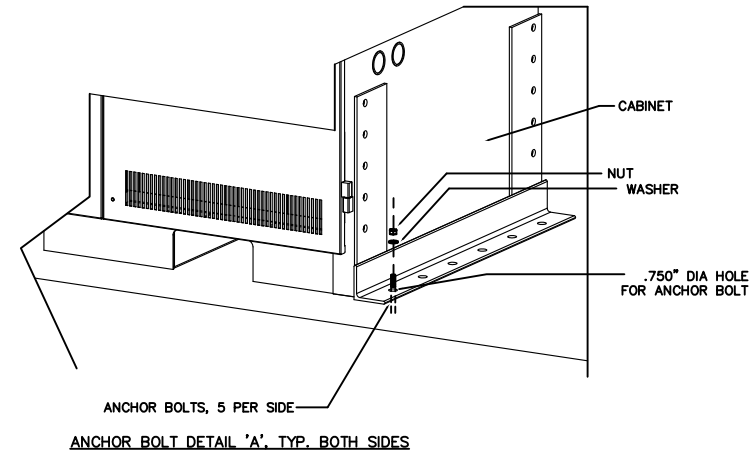
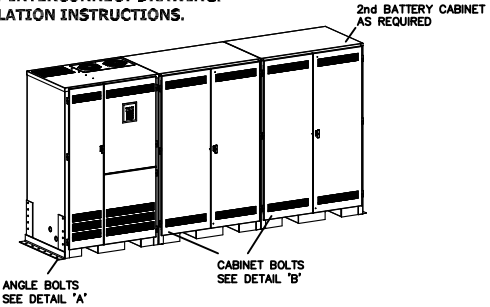


24kW SYSTEMS

SEISMIC INSTALLATION:

SEOR TO DESIGN AND SPECIFY UNIT ANCHORAGE.

1. POSITION INVERTER CABINET AS SHOWN IN APPROPRIATE PLAN VIEW.
2. POSITION FIRST BATTERY CABINET AGAINST SIDE OF ELECTRONICS CABINET AS SHOWN IN APPROPRIATE PLAN VIEW. SIX(6) STUDS ON INVERTER CABINET TO MATE WITH SIX(6) CLEARANCE HOLES ON BATTERY CABINET. REPEAT WITH ADDITIONAL BATTERY CABINET(S) AS REQUIRED.
3. SECURE CABINETS TO ONE ANOTHER USING SUPPLIED 1/4-20 HARDWARE. REFER TO DETAIL 'C'.
4. SECURE CABINETS USING ANCHOR BOLTS & HARDWARE. REFER TO DETAIL 'A' FOR EXTERNAL SIDE & FRONT MOUNTS. REFER TO DETAIL 'B' FOR INTERNAL CABINET FRONT MOUNTS.
5. REMOVE SEISMIC BRACKETS FROM INSIDE OF BATTERY CABINET(S). REFER TO BATTERY INTERCONNECT DRAWING.
6. INSTALL BATTERIES IN CABINET(S). BATTERIES MUST BE BACK AGAINST REAR WALL OF BATTERY CABINET.
7. REINSTALL SEISMIC BRACKETS. REFER TO BATTERY INTERCONNECT DRAWING.
8. CONNECT BATTERIES PER SUPPLIED BATTERY INTERCONNECT DRAWING. SEE MANUAL FOR FURTHER BATTERY INSTALLATION INSTRUCTIONS.



REV.	DESCRIPTION	DATE	BY
B	ADDED ANCHOR POINT @ 89.15" TO 33-50K SYSTEM.	08/16/16	KW
A	REMOVED CONCRETE REFERENCES.	06/05/12	KW

SCALE: NONE DRAWN BY: K W
 DATE: 03/28/12

SEISMIC DRAWING, ANCHOR BOLT PLACEMENT
 IC3 24 - 50k OSHPD CABINETS DRAWING NUMBER: 203572B