

EPC - DMX

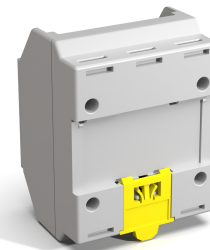
Emergency Power Control for DMX Controlled Loads

In the past, emergency lights were kept on 24 hours a day to meet life safety codes. Now, you can use a UL 924 listed Emergency Power Control, Model EPC-DMX, to convert normal light fixtures into approved emergency lights. The EPC-DMX saves energy and money while ensuring compliance with both life safety and energy codes.

During normal operation, emergency fixtures can be controlled by a DMX lighting control system.

During a utility power interruption, the EPC-DMX automatically bypasses the normal lighting controls, turning the emergency lights to a preset scene, regardless of previous settings.

The EPC-DMX can be mounted in a panel or junction box.



WARRANTY



LED COMPATIBLE

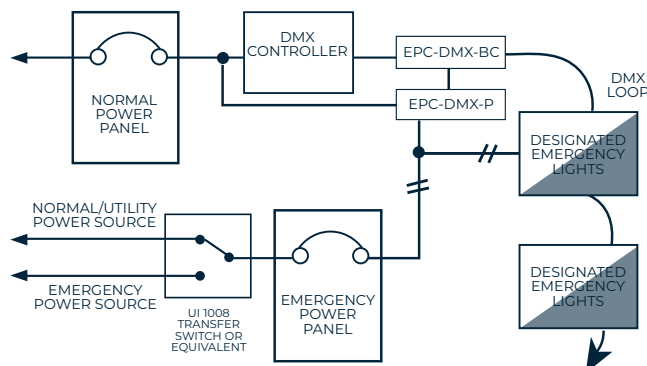


UL924 LISTED

PRODUCT FEATURES

- Two-part construction for safe installation:
 - Line voltage sensing is isolated from low voltage DMX control component.
- Automatic Diagnostics
 - Field-selectable test options including integral manual test, remote test, and automatic monthly testing.
- Fire Alarm override input
- Utility & Emergency Power Indicator LED's
- Memorize & Recall feature
 - Set the desired emergency scene and it will be recalled automatically during a power interruption.
- 3 Phase Sensing
 - Monitor 3 separate circuits for power loss conditions with a single unit.
- Integral Opto-splitter : Includes 3 opto-splitters
- Small size permits mounting in standard electrical junction boxes and panels

SINGLE LINE DRAWING



WIRING DIAGRAM

Wiring Diagram #1 (Suggested): During normal operation, the DMX controller can control emergency lighting. During emergency operation, the DMX controller recalls a pre-recorded scene to the emergency lighting.

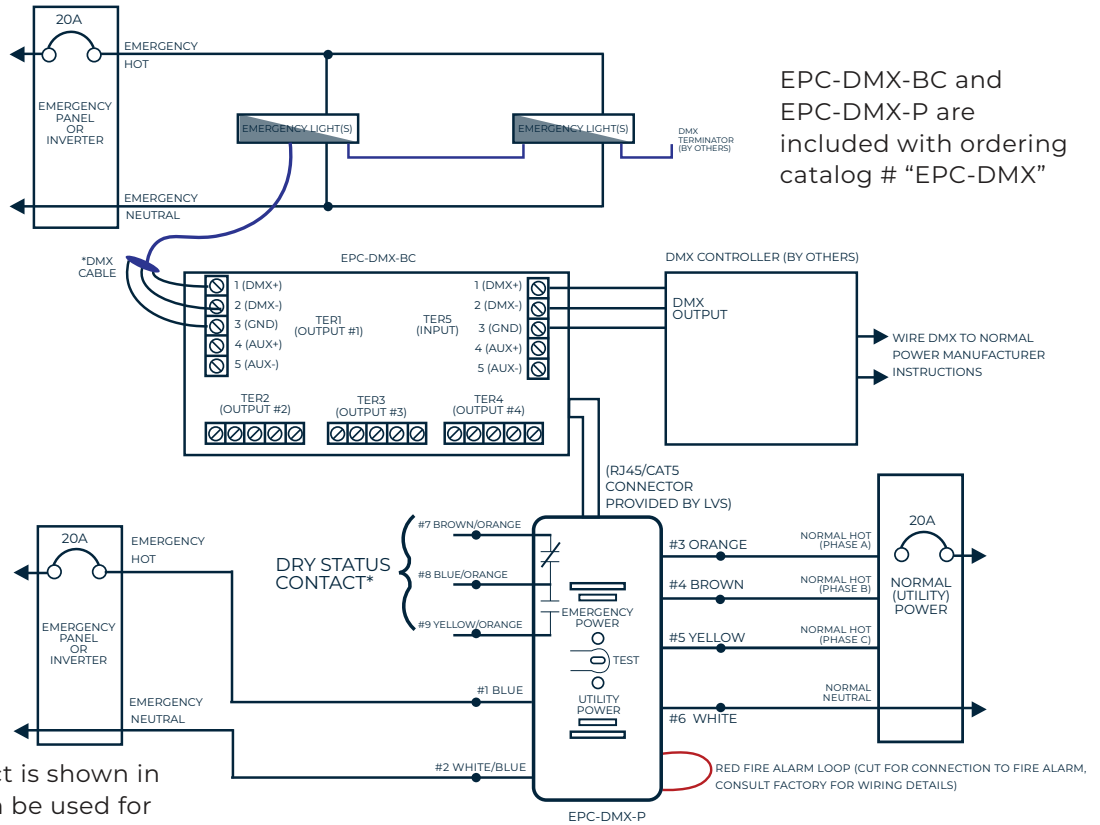
*DMX CABLE NOTE:
Use Belden 9729
Cable or equivalent
for DMX wiring.

NOTE: AUX+/AUX-
outputs are optional.
No connection
required.

NOTE: OUTPUT
#2,3,4 are optically
isolated output
channels. At all times
they will duplicate
the state of OUTPUT
#1 terminal block.
Consult factory for
further information.

Note: Dry status contact is shown in
emergency state. It can be used for
BMS and other remote control
purposes. If unused, cap #7,8,9 leads

EPC-DMX-BC and
EPC-DMX-P are
included with ordering
catalog # "EPC-DMX"



SPECIFICATIONS

Model Number

EPC-DMX

Electrical Data

Sensing Input

120 - 277V (3 Phase)

Warranty

5 Year Limited Warranty

Mechanical Data

Mounting

Junction Box Mount, Panel Mount (DIN)

Rating

UL94-5VA

Shipping Weight/Color

12 oz. / Black (pt 1) 12 oz. / White (pt 2)

Temperature

0°C - 60°C (32°F - 140°F)

Dimensions EPC-DMX

EPC-DMX-BC (PART 1) : 3" x 4" x 2.5"

EPC-DMX-BC (PART 2) : 1.7" x 3" x 1.75"

