

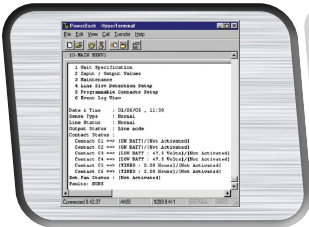
MP2000W-TB Traffic Battery Backup Systems



Product Highlights

- 2000 watt; 2000VA
- 48VDC System
- Accepts existing MEPS SNMP Ethernet Cards
- Backlit LCD Displays - easily readable in all light conditions.
- Remote Access through a serial interface via an RS232, USB port or Ethernet communication card.
- Data Dump Commands Available Through RS232 Port or USB Port
- Six Fully Programmable Dry Contacts - provides greater control of system components and functions.
- Time/Date Stamp of Events and Alarms - Up To 100 Events with Download and Print Capability
- Provides Fully Interactive Program and Status Reporting Using Built-In, Windows™-Compatible Software
- Local Keypad Programmability - Including Status Monitoring, Setting/Testing of Various Parameters, Dry Contact Programming, and More; No Laptop Necessary

FEATURES



STATUS & EVENT REPORTING

MP Series UPS provides fully interactive program and status reporting capabilities via built-in, Windows™-compatible software. Whether using this feature for set-up, maintenance, or as a link to your traffic control command center, the ability to view moment-by-moment operations will enhance your traffic engineering and supervisory control capabilities.



ADVANCED DISPLAY READOUT

The MP Series provides you with the tools to monitor and maintain your system at peak performance. The MP Series utilizes a bright LCD display and touch keys to provide real time information including input/output status, battery percentages, online and load status, time/date stamp of events, and more. Easy-to-read scrolling menus assist you with maintenance and programming of functions.



CONNECTIVITY

Effective system integration and communications depends on connectivity. In addition to AC input/output connectors, Myers EPS MP Series provides NC/NO dry contacts (fully programmable), giving you greater versatility in powering external system components during normal or battery backup operations. An RS232 serial port, SNMP ethernet or USB allows for complete remote communications.

General Specifications

Input/Output	Voltage (VAC) Nominal 120
.....	Frequency (Hz) Nominal 60
Input Current	Maximum 30A
Input Voltage Variation	-23% to +17%
Voltage Waveform	Sine
Typical Line Efficiency	95%-97%
Typical Output Voltage	< 3%
Typical Harmonic Distribution	< 3% THD
Max. Charge Current	12 (ADC)
Typical Transfer Time	7ms (max w/PTS = 60ms)
.....	7ms w/ buck & boots/PTS enabled
Audible Noise	< 50 at 1m (dBA)
Unit Operating Temp.	-37°C to +74°C
Battery Operating Temp.	-25°C to +74°C
Lightning / Surge Protection	Design to: ANSI/ IEEE
.....	IEC 1000-4-5, IEEE C62.41

WEIGHTS & DIMENSIONS

MP2000W-TB	Weight: 46.2 lbs
.....	Width: 17 in Height: 5.25 in Depth: 10.3 in
PTS (Power Transfer Switch)	Weight: 7 lbs
.....	Width: 4.75 in Height: 4.6 in Depth: 6.5 in

Note: The existing 48VDC PTS will work with this inverter. This unit is a drop-in replacement for all existing PB, MP models in 48VDC. However, Battery Cable uses a different connector. Please consult your distributor for replacement connector for existing battery cables.

Three Modes of Backup Power Are Available

Normal Operation: Supports full functions for intersections not exceeding module's specified output.

Flash Operation: Red/Amber flash operations for intersections that exceed module's specified output for normal operation.

Normal/Flash Combo: Provides normal operation then reverts to flash after 2 hours or when 40% battery capacity is reached (factory default), thereby prolonging operating time.* MP Series UPS are fully programmable including duration, percentage, and dry contact assignment.

MP2000W-TB

OUTPUT POWER (VA)	2000
ACTIVE OUTPUT POWER (WATTS)	2000
48VDC BATTERY SYSTEM	♦
TRANSIENT VOLTAGE PROTECTION FROM DAMAGING LINE SPIKES	♦
LOW HARMONIC AC SINE WAVE OUTPUT	♦
INTELLIGENT BUCK & BOOST OPERATION FOR BROWNOUT & SURGE PROTECTION	♦
NOISE SUPPRESSION, FCC CLASS A	♦
MULTIPLE MOUNTING CONFIGURATIONS	♦
6 FULLY PROGRAMMABLE DRY CONTACT FOR CONTROL & REPORTING FUNCTIONALITY	♦
BACKLIT LCD DISPLAY, 4-ROW BY 20 CHARACTERS BLACK ON GREEN	♦
TIME / DATE STAMP OF EVENTS & ALARMS	♦
INTELLIGENT REMOTE COMMUNICATION CAPABILITY VIA RS232, USB	♦
ETHERNET MODEM	♦
ETHERNET SNMP CARD - SNMP COMPLIANT	♦
WEB-BASED ETHERNET	♦

MP2000W-TB Battery Options & Run Times

MP Series UPS batteries are specifically designed for UPS applications and are completely sealed and maintenance-free. These absorbed glass mat, valve regulated lead acid (AGM/VRLA) batteries can withstand extreme temperatures, are rated non-spillable by ICAO IATA/DOT and available in a variety of ampere-hour ratings. Battery harnesses with "quick-connect" cables are included with complete system solutions packages. Sample run times are listed below based on a single string (4 batteries) at 25°C.

POWER OUTPUT	105AH BATTERY RUNTIME	
	HOURS	MINUTES
1000	15	50
1250	9	45
1350	6	55
1350	5	10
1450	4	5
1550	3	25
1650	2	50
1750	2	30
1800	2	10
1850	1	55
1900	1	40
1950	1	30
2000	1	25

Note: Stated run times are approximate. Actual run times depend on load requirements, frequency of operation, and temperature.

