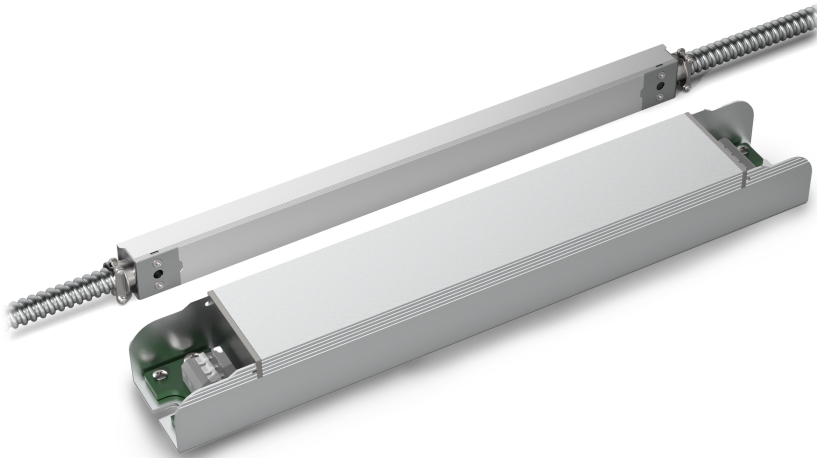


LED-BP-SLIM Series Emergency LED Battery Pack



**Slimmest & Lowest Profile in the Industry.
Field & Factory Installable Emergency LED Battery Packs**



*LED-BP-SLIM-10W & LED-BP-SLIM-10W-TB SHOWN ABOVE

AVAILABLE IN FLEXIBLE CONDUIT & PUSH IN TERMINAL BLOCK MODELS

SIZES : 10W

The LED-BP-SLIM Series battery packs allow users to convert normal LED luminaires into approved emergency lighting luminaires. With the slimmest and lowest profile in the industry, these units can be mounted inside or outside of the luminaire.

During emergency operation, LED-BP-SLIM automatically transfers to battery power. The automatic voltage detection circuit matches the output voltage to specific LED fixture, and runs it at constant power/light output for a minimum of 90 minutes. When the AC power is restored, the emergency LED-BP-SLIM Series switches the system back to normal mode of operation and resumes battery charging.

STANDARD FEATURES



CERTIFIED: UL 924 Listed

Converts Led Luminaires Into Approved Emergency Lights For 90 Minutes

SMART: Constant Power Output With Automatic Overload And Low Battery Protection

Automatic Voltage Detection: Can Be Used With Led Drivers/luminaries Operating From 5-300VDC

Self-diagnostics

RELIABLE: Li-ion Batteries Provide Long Life And Are Maintenance-free

5-year Warranty

CONVENIENT: Led Test Switch

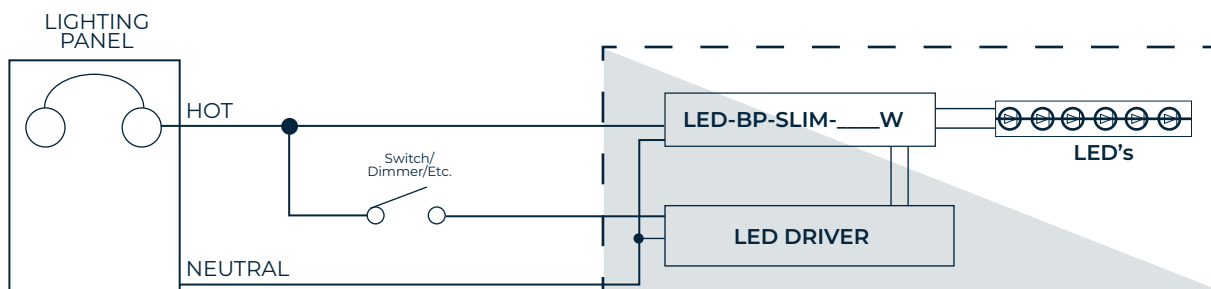
Can Be Mounted Inside Or Outside Of The Luminaire

Unique Feature: Conduit Version May Be Converted To Tb Version If Installation Requirements Change

Suitable For Use In Dry Or Damp Locations Available In 10W Size

120-277VAC Universal Input

SINGLE LINE DRAWING



SPECIFICATIONS

For Flexible Conduit Model:

MODEL NO	INPUT VOLTAGE	OUTPUT VOLTAGE (VDC)	OUTPUT POWER (WATTS)	DIMENSIONS L x W x H (INCHES)	TEMPERATURE (°C)	WARRANTY
LED-BP-SLIM-10W	120/277V AC 50/60 Hz	10-300	10	12.52 x 1.18 x 0.87	0~50	5-year Replacement Warranty

For Push In Terminal Block Model:

MODEL NO	INPUT VOLTAGE	OUTPUT VOLTAGE (VDC)	OUTPUT POWER (WATTS)	DIMENSIONS L x W x H (INCHES)	TEMPERATURE (°C)	WARRANTY
LED-BP-SLIM-10W-TB	120/277V AC 50/60 Hz	10-300	10	10.24 x 1.18 x 0.87	0~50	5-year Replacement Warranty