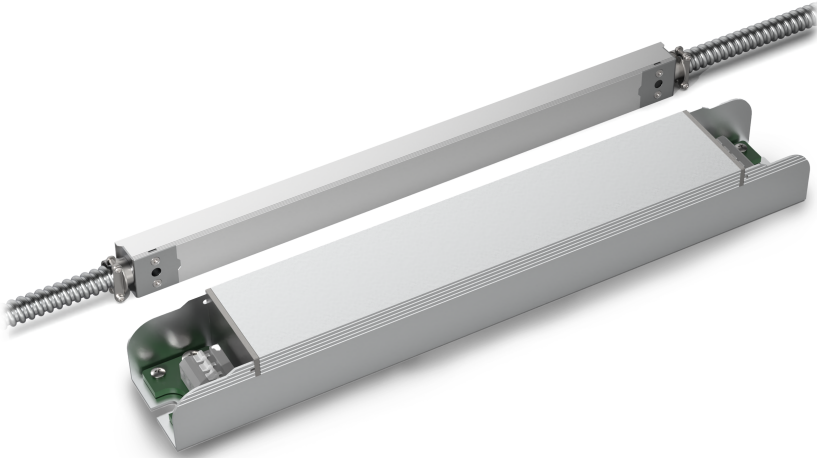


# LED-BP-SLIM Series Emergency LED Battery Packs



**Slimmest & Lowest Profile in the Industry.  
Field & Factory Installable Emergency LED Battery Packs**



*\*LED-BP-SLIM-13.5W & LED-BP-SLIM-13.5W-TB SHOWN ABOVE*

**AVAILABLE IN FLEXIBLE CONDUIT & PUSH IN TERMINAL BLOCK MODELS**

SIZES :4.5W, 9W, 13.5W, 18W

The LED-BP-SLIM Series battery packs allow users to convert normal LED luminaires into approved emergency lighting luminaires. With the slimmest and lowest profile in the industry, these units can be mounted inside or outside of the luminaire.

During emergency operation, LED-BP-SLIM automatically transfers to battery power. The automatic voltage detection circuit matches the output voltage to specific LED fixture, and runs it at constant power/light output for a minimum of 90 minutes. When the AC power is restored, the emergency LED-BP-SLIM Series switches the system back to normal mode of operation and resumes battery charging.

### STANDARD FEATURES



**CERTIFIED:** UL 924 Listed

Converts Led Luminaires Into Approved Emergency Lights For 90 Minutes

**SMART:** Constant Power Output With Automatic Overload And Low Battery Protection

Automatic Voltage Detection: Can Be Used With Led Drivers/Luminaires Operating From 5-300VDC

Self-diagnostics

**RELIABLE:** Li-ion Batteries Provide Long Life And Are Maintenance-free  
5-year Warranty

**CONVENIENT:** Led Test Switch

Can Be Mounted Inside Or Outside Of The Luminaire

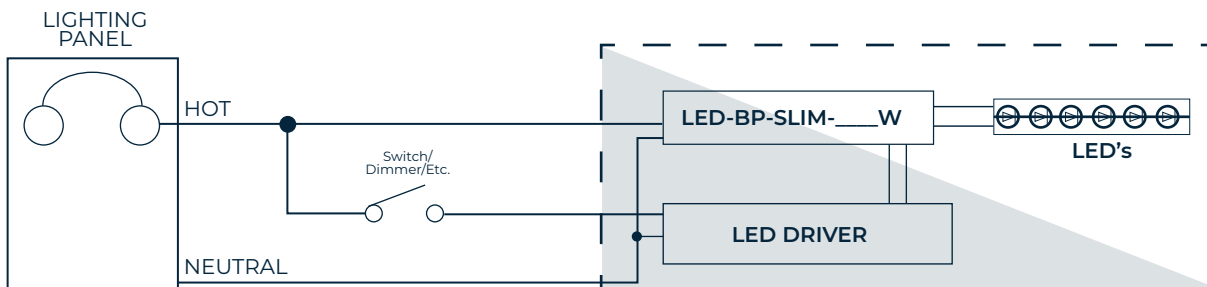
Unique Feature: Conduit Version May Be Converted To Tb Version If Installation Requirements Change

Suitable For Use In Dry Or Damp Locations

Available In 4.5W - 18W Sizes (Approx. 450-1800 Lumen Output)

120-277VAC Universal Input

### SINGLE LINE DRAWING



## SPECIFICATIONS

### For Flexible Conduit Model:

MODEL NO	INPUT VOLTAGE	OUTPUT VOLTAGE (VDC)	OUTPUT POWER (WATTS)	DIMENSIONS L x W x H (INCHES)	TEMPERATURE (°C)	WARRANTY
LED-BP-SLIM-4.5W	120/277V AC 50/60 Hz	5-200	4.5	10.16 x 1.18 x 0.87	0~55	5-year Replacement Warranty
LED-BP-SLIM-9W	120/277V AC 50/60 Hz	10-300	9	12.52 x 1.18 x 0.87	0~55	
LED-BP-SLIM-13.5W	120/277V AC 50/60 Hz	15-300	13.5	15.87 x 1.18 x 0.87	0~55	
LED-BP-SLIM-18W	120/277V AC 50/60 Hz	20-300	18	18.43 x 1.18 x 0.87	0~55	

### For Push In Terminal Block Models:

MODEL NO	INPUT VOLTAGE	OUTPUT VOLTAGE (VDC)	OUTPUT POWER (WATTS)	DIMENSIONS L x W x H (INCHES)	TEMPERATURE (°C)	WARRANTY
LED-BP-SLIM-4.5W-TB	120/277V AC 50/60 Hz	5-200	4.5	7.87 x 1.18 x 0.87	0~55	5-year Replacement Warranty
LED-BP-SLIM-9W-TB	120/277V AC 50/60 Hz	10-300	9	10.24 x 1.18 x 0.87	0~55	
LED-BP-SLIM-13.5W-TB	120/277V AC 50/60 Hz	15-300	13.5	13.58 x 1.18 x 0.87	0~55	
LED-BP-SLIM-18W-TB	120/277V AC 50/60 Hz	20-300	18	16.14 x 1.18 x 0.87	0~55	

\*Note: Cold Weather rated battery packs available, contact factory for details