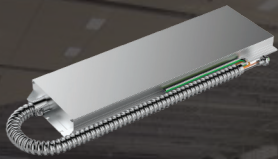
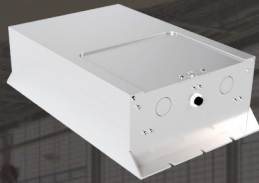


QUICK SHIP INVERTER PROGRAM



**MEPS LVU 25VA
and 50VA**



**MEPS LVM 125VA
and 250VA**



**MEPS LV 175VA, 350VA,
550VA, 750VA, and 1100VA**



**MEPS EM 1.0kVA, 1.6kVA,
2.2kVA, and 2.8kVA**

Emergency Inverters Shipped in 5 Days or Less



PROGRAM DETAILS

- New: Freight allowed - **now \$2,500**
- LVM, LV, LVU, and EM Systems
- Options Per Below
- Maximum 3 Units (LV & EM)
- **Order must be marked for Quick Ship**
- Other configurations available with two-week leadtime

Product	Height (in)	Width (in)	Depth (in)	Total System Weight (lbs)
LVU 25VA	13.3-L	5.3	1.4	6
LVU 50VA	20.8-L	5.3	1.4	9.8
LVM 125VA (inverter only)	11.5	6.9	3.4	9.2
LVM 250VA (inverter only)	15.7	6.9	3.4	15.4
LV 175VA (wall - standard)	17.8	14.3	6.5	55
LV 350VA	22	19	9.3	100
LV 550VA	22	19	9.3	130
LV 750VA	22	25.3	9.3	180
LV 1100VA	25.3	26	10.1	246
EM 1.0KVA	28	25	11	281
EM 1.6KVA	44	25	11	405
EM 2.2KVA	44	25	11	494
EM2.8KVA	55	25	11	603



QUICK SHIP INVERTER PROGRAM ORDERING GUIDE

LVU Series Single Phase

EXAMPLE: LVU-2-RT (25VA with Remote Test Switch Option)

System Type	VA/W	Options
LVU - Standard Micro Inverter	2 - 25	R - Remote Test Switch
Multi-Volt: 120V In/120V Out OR 277V In/277V Out	5 - 50	

LVM Series Single Phase

EXAMPLE: LVM-125-G (125VA with Grid Mount Option)

System Type	VA/W	Options
LVM	125	W - Wall Mount Bracket
Multi-Volt: 120V In/120V Out OR 277V In/277V Out	250	G - Grid / Plenum Rated
		RT - Remote Test Switch

LV Series Single Phase

EXAMPLE: LVM-125-G (125VA with Grid Mount Option)

System Type	VA/W	Enclosure Color	Model Type	Output Breakers ²			Options (Pick Any)
				Output	AMP	QTY	
LV Multi-Volt: 120V In/120V Out OR 277V In/277V Out	1 - 175	R - Red (Standard)	1 - Standard (UL 924)	(Blank) - None	5	01-06	B - Floor Mount (Adds 2.7" to Total Height)
	2 - 350			B - Normally On	10		C - Status Monitoring Dry Form C Contacts
	3 - 550			N - Normally Off ³	15		DR - Dimming Relay (Breaks 0-10V Dimming Signal)
	4 - 750			S - Switched ⁴	20		F - Battery Charger Upgrade (12-Hour Recharge)
	5 - 1100						LVST - Start Up & Same Day Training
							S - Battery Strapping

1) VA = W

2) Maximum output breakers available: 175VA-no OCBs, 350/550VA 3 OCBs max, 750VA and 1100VA 6 OCBs max.

3) Normally off not available when using switched output.

4) Maximum of 1 switched output with 10 amp circuit breaker.

5) 3-year standard warranty includes all parts. 10 year prorated warranty on batteries.

EM Series Single Phase

EXAMPLE: 1-EM-1-S-BA2007-2YW = 120VAC Input/Output, 1.0kVA, (7) Normally On 120V 20 Amp Breakers, Factory Start-up & 2-Year Electronics Warranty

Input/Output ¹	System Type	kVA/kW ²	Battery Type	Output Breakers ³			Options (Pick Any)	Warranty ⁷
				Output	AMP	QTY		
1 - 120/120	EM	1 - 1.0	S - Standard (VRLA)	BA - Normally On 120V	10	01-10 ³	A ⁶ - Remote Summary Alarm Panel	2YW ⁴ - Start-Up and Same Day Training, extends electronics warranty to 2-years
2 - 277/277		2 - 1.6		NA - Normally Off 120V	16		BL - Breaker Lock(s)	
		3 - 2.2		BD - Normally On 277V	20		F - Floor Mount (Adds 4" to Total Height)	
		4 - 2.8		ND - Normally Off 277V	25		M - Internal Maintenance Bypass ⁵	
					32		S - Summary Fault Dry Form C Contacts	3YP - 3-Year Preventative Maintenance Plan
							T - Output Trip (Supervised) Alarm	5YW - 5-Year Extended Electronics Warranty
							W - Wall Mount Bracket	
							Y - Battery Strapping	TR - Training (If Required Other than Day of Start-Up)
							Z - Seismic/Raised Floor (Adds 4" to Total Height)	

1) Only single phase voltages available.

2) kVA = kW

3) Unless output circuit breakers are specified, a single output breaker will be supplied with each unit and the current rating will vary based on the output power and voltage rating of the unit. Maximum specified output breakers available: 10 unsupervised (1-pole), 6 supervised (1-pole).

4) One year warranty is standard, without factory start-up (2YW option).

5) Option "M" is typically "make before break." A "break before make" switch is offered optionally.

6) Option "A" does not require option "S". They can be ordered individually or together.

7) 10-year prorated warranty on batteries.



610-868-3500
InverterSales@MyersEPS.com
www.MyersEPS.com



Contact your local sales representative for additional details and pricing.

Program details subject to change without notice. Full mounting options, accessories, and more on MyersEPS.com.

Rev. 20241113